

**Fenelon Gold
Plan view**

March 25, 2019

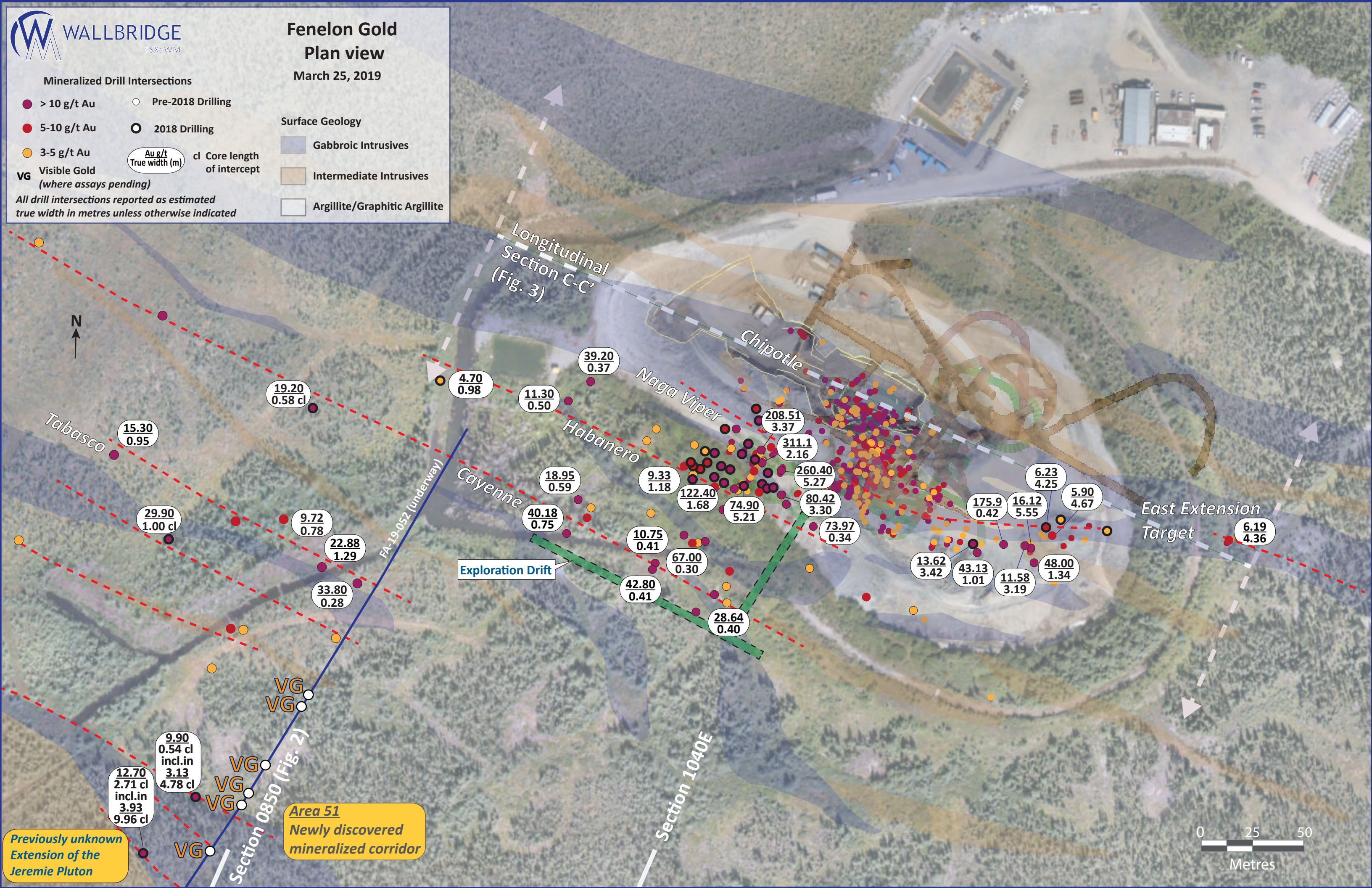
Mineralized Drill Intersections

- > 10 g/t Au
- 5-10 g/t Au
- 3-5 g/t Au
- Visible Gold (where assays pending)
- Pre-2018 Drilling
- ◉ 2018 Drilling
- Au g/t True width (m) cl Core length of intercept

Surface Geology

- Gabbroic Intrusives
- Intermediate Intrusives
- Argillite/Graphitic Argillite

All drill intersections reported as estimated true width in metres unless otherwise indicated



Longitudinal Section C-C' (Fig. 3)

Chipotle

Naga Viper

Habanero

Cayenne

East Extension Target

FA-19-052 (underway)

Exploration Drift

Section 1040E

Section 0850 (Fig. 2)

Area 51
Newly discovered mineralized corridor

Previously unknown Extension of the Jeremie Pluton



12.70
2.71 cl
incl.in
3.93
9.96 cl

9.90
0.54 cl
incl.in
3.13
4.78 cl

VG
VG

VG
VG
VG

33.80
0.28

22.88
1.29

9.72
0.78

29.90
1.00 cl

15.30
0.95

19.20
0.58 cl

4.70
0.98

11.30
0.50

39.20
0.37

40.18
0.75

18.95
0.59

9.33
1.18

122.40
1.68

74.90
5.21

42.80
0.41

10.75
0.41

67.00
0.30

28.64
0.40

260.40
5.27

80.42
3.30

73.97
0.34

208.51
3.37

311.1
2.16

13.62
3.42

43.13
1.01

11.58
3.19

6.23
4.25

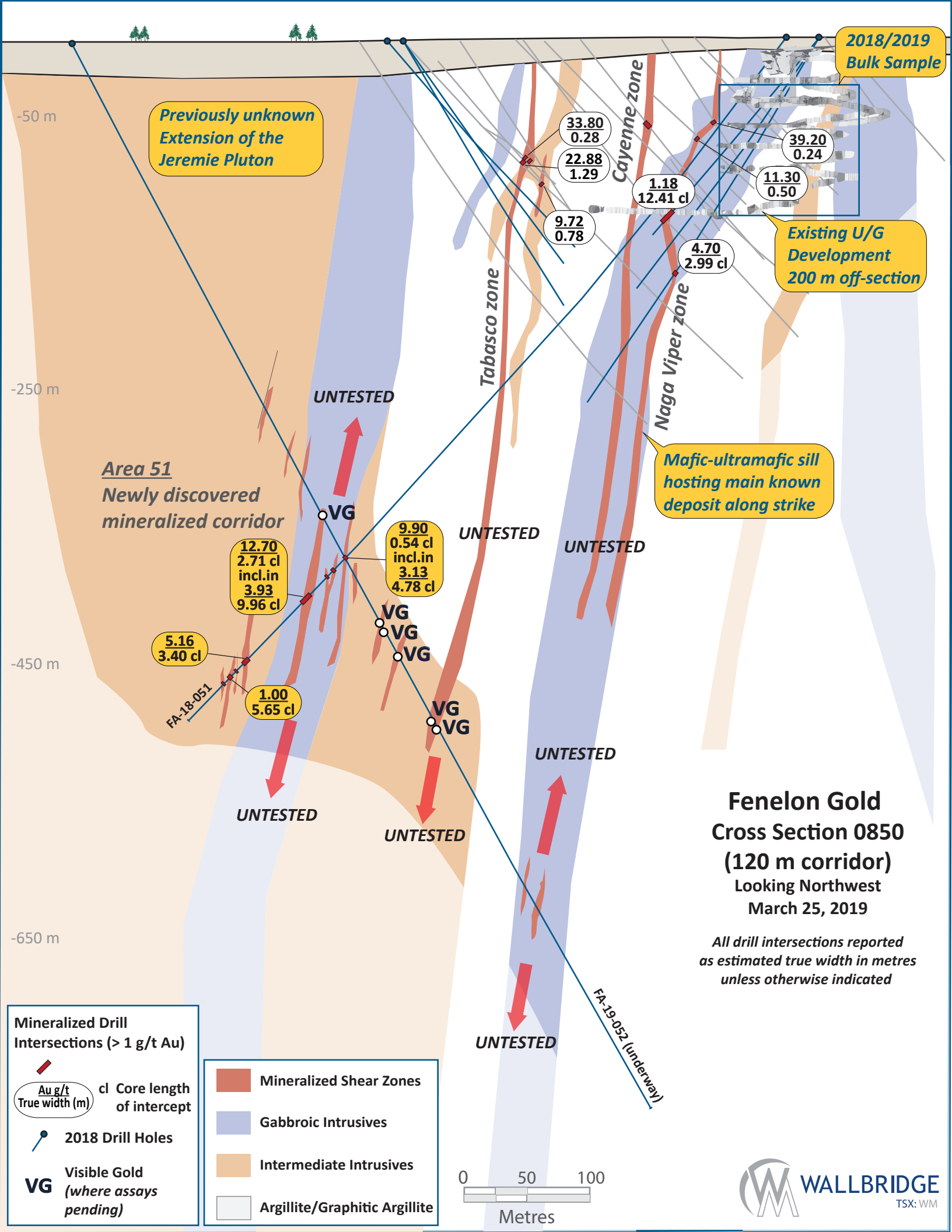
175.9
0.42

16.12
5.55

5.90
4.67

6.19
4.36

48.00
1.34



2018/2019 Bulk Sample

Previously unknown Extension of the Jeremie Pluton

Existing U/G Development 200 m off-section

Mafic-ultramafic sill hosting main known deposit along strike

Area 51 Newly discovered mineralized corridor

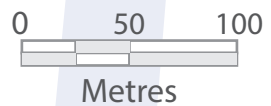
Fenelon Gold
Cross Section 0850
(120 m corridor)
 Looking Northwest
 March 25, 2019

All drill intersections reported as estimated true width in metres unless otherwise indicated

Mineralized Drill Intersections (> 1 g/t Au)

- Mineralized Shear Zones
- Gabbroic Intrusives
- Intermediate Intrusives
- Argillite/Graphitic Argillite
- 2018 Drill Holes
- Visible Gold (where assays pending)
- Core length of intercept

- Mineralized Shear Zones
- Gabbroic Intrusives
- Intermediate Intrusives
- Argillite/Graphitic Argillite



-50 m
-250 m
-450 m
-650 m

UNTESTED

UNTESTED

UNTESTED

UNTESTED

UNTESTED

UNTESTED

UNTESTED

FA-19-052 (underway)

FA-18-051

33.80
0.28
22.88
1.29

39.20
0.24
11.30
0.50

9.72
0.78

1.18
12.41 cl

4.70
2.99 cl

12.70
2.71 cl
incl.in
3.93
9.96 cl

9.90
0.54 cl
incl.in
3.13
4.78 cl

5.16
3.40 cl

1.00
5.65 cl

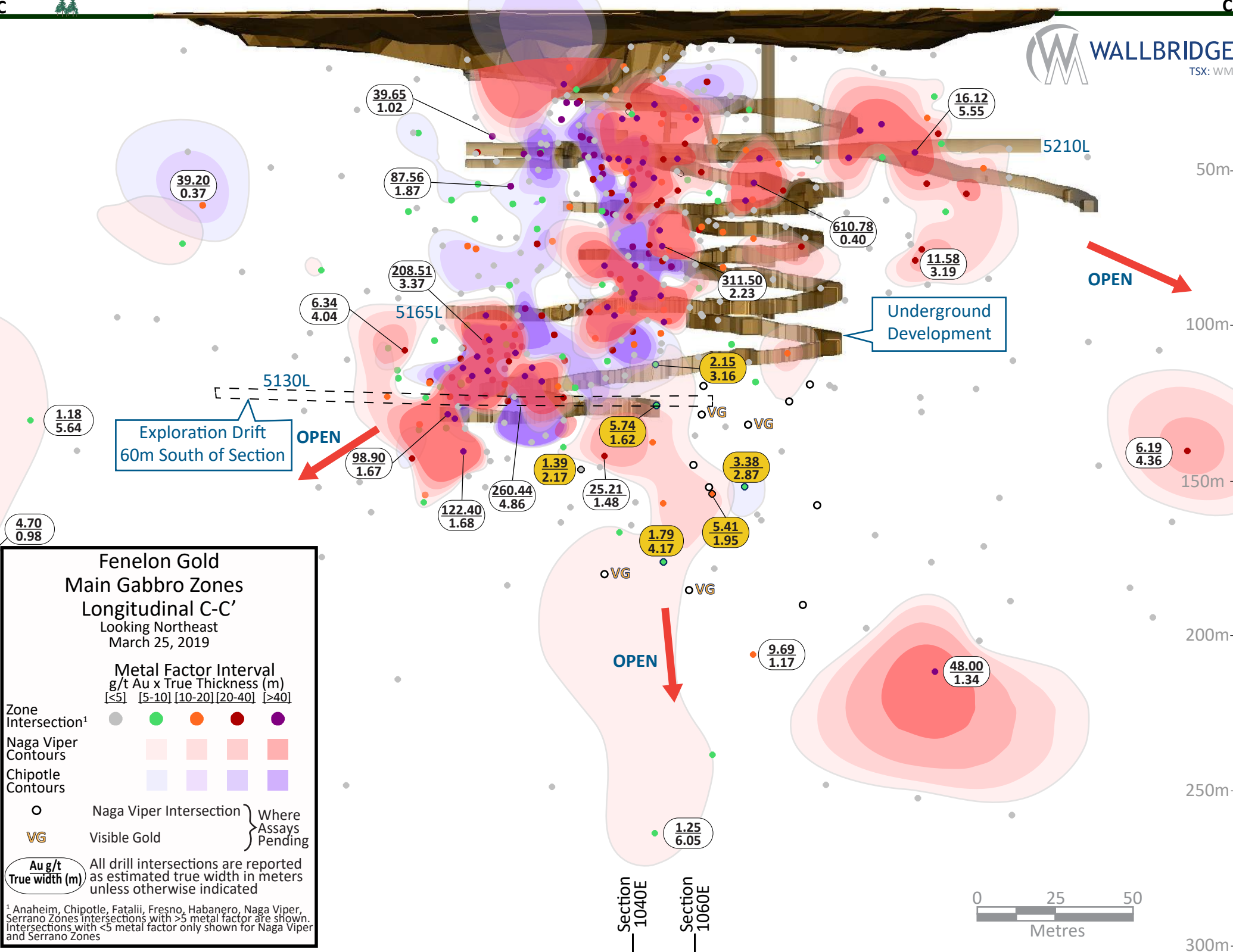
VG
VG
VG

VG
VG

Cayenne zone

Tabasco zone

Naga Viper zone



**Fenelon Gold
Main Gabbro Zones
Longitudinal C-C'
Looking Northeast
March 25, 2019**

**Metal Factor Interval
g/t Au x True Thickness (m)**

<5	[5-10]	[10-20]	[20-40]	>40
----	--------	---------	---------	-----

Zone Intersection¹

Grey	Green	Orange	Red	Purple
------	-------	--------	-----	--------

Naga Viper Contours

Lightest Pink	Light Pink	Medium Pink	Dark Pink
---------------	------------	-------------	-----------

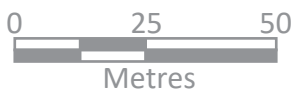
Chipotle Contours

Lightest Purple	Light Purple	Medium Purple	Dark Purple
-----------------	--------------	---------------	-------------

○ Naga Viper Intersection } Where Assays Pending
 VG Visible Gold

**Au g/t
True width (m)**
 All drill intersections are reported as estimated true width in meters unless otherwise indicated

¹ Anaheim, Chipotle, Fatalii, Fresno, Habanero, Naga Viper, Serrano Zones intersections with >5 metal factor are shown. Intersections with <5 metal factor only shown for Naga Viper and Serrano Zones



Section 1040E
Section 1060E

50m
100m
150m
200m
250m
300m

Fenelon Gold Compilation Map

March 25, 2019

Mineralized Drill Intersections

- > 10 g/t Au
- 5-10 g/t Au
- 3-5 g/t Au
- 1-3 g/t Au
- Pre-2018 Drilling
- ⊙ 2018 Drilling
- VG Visible Gold (where assays pending)
- $\frac{\text{Au g/t}}{\text{True width (m)}} \text{ cl}$ Core length of intercept

All drill intersections reported as estimated true width in metres unless otherwise indicated

Surface Geology

- Gabbroic Intrusives
- Intermediate Intrusives (Jeremie Pluton)
- Iron Formation
- Sedimentary-Volcanic Rocks
- Interpreted Faults

Abitibi Geophysics
OreVision IP survey
completed in Jan 2019

Fig.1

Area 51
Newly discovered
mineralized corridor

Previously unknown
Extension of the Jeremie Pluton
(interpretation based on geophysics
and scarce drill hole data)

12.70
2.71 cl
incl.in
3.93
9.96 cl

9.90
0.54 cl
incl.in
3.13
4.78 cl

7.50
0.86

5.91
1.20

6.16
3.00

34.20
0.32

3.08
3.27

