

# Fenelon Gold Compilation Map

February 21, 2019



**Mineralized Drill Intersections**

- > 10 g/t Au
- 5-10 g/t Au
- 3-5 g/t Au
- 1-3 g/t Au
- Pre-2018 Drilling
- ⊙ 2018 Drilling
- VG Visible Gold (where assays pending)
- $\frac{\text{Au g/t}}{\text{True width (m)}} \text{ cl}$  Core length of intercept

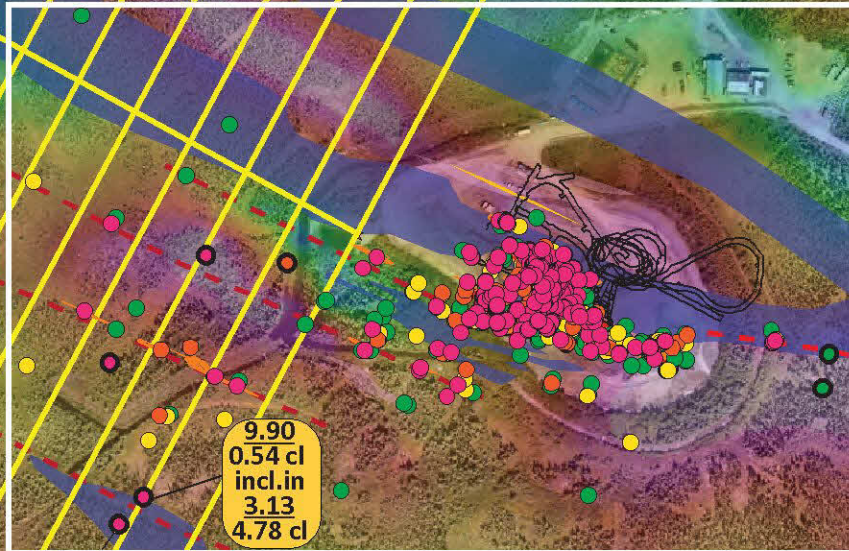
**Surface Geology**

- Gabbroic Intrusives
- Intermediate Intrusives (Jeremie Pluton)
- Iron Formation
- Sedimentary-Volcanic Rocks
- Interpreted Faults

*All drill intersections reported as estimated true width in metres unless otherwise indicated*

Abitibi Geophysics  
OreVision IP survey  
completed in Jan 2019

Fig.1



5.91  
1.20

6.16  
3.00

34.20  
0.32

3.08  
3.27

9.90  
0.54 cl  
incl.in  
3.13  
4.78 cl

12.70  
2.71 cl  
incl.in  
3.93  
9.96 cl

7.50  
0.86

